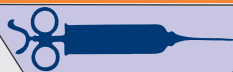




# Emergency and Critical Care Nursing for PGCC



## Prospectus



## Centre for Continuing Nursing Excellence (CCNE)

• Education • Learning • Training • Research

[nursing.celnet.in](http://nursing.celnet.in)

# Centre for Continuing Nursing Excellence (CCNE)

## Products & Services



1

### Journals

JournalsPub & STM Journals is a leading provider of content solution to enhance the outlook towards research and to improve the quality of scientific communication in research, education and professional practices.

2

### Conferences

STM Conferences (STMC) is a platform where you can get the detail information about the conferences, seminars, workshops and other-related events. These are the events where the scholars/researchers can share their knowledge and help the modern world to get the maximum utilization through it.

3

### Subscriptions

A business model where our customer must pay a subscription price to have access to the products and services.

### Membership

Membership helps to promote professional management practices in all areas and fosters a managerial ethos. It also provides a forum for mutual sharing of numerous ideas, experience and expertise.

4

### Training Programmes

CCNE is dedicated to supporting new nurses who are entering practice as well as experienced nurses who are changing specialty areas. It is developing 60 different educational nursing training programs, which help the aspirants to gain knowledge in the divergent areas of nursing.

5

### Books

CCNE contain 70 nursing books under nolegein.in, all books incorporate depth and current knowledge of all wide field of nursing science

6

To Know More about the initiatives you may contact

Rekha Mahey (Project Manager)  
Email: rekha@celnet.in  
Tel: (+91) 120 4781-216



website: <http://nursing.celnet.in>  
A-118, 1st Floor, Sec 63,  
Noida 201301, U.P, India

# CCNE: An Overview

Centre for Continuing Nursing Excellence (CCNE) is an unique nursing collaborative body that provides innovative products based on the integration of academics, life skills and exposure to the Nursing Science. It is a leading network for nurses, faculties, researchers and students that helps nursing stakeholders to perform self-directed learning and continually aspire to improve individual professional skills.

The ambition of CCNE is to advance nursing professionals with knowledge and skills in managing health care issues and developing clinical practices. It is a forum which connects all to explore issues of mutual concern as well as exchange knowledge of different fields of nursing science and research, share evidence and ideas, and generate solutions.

## Products covered by CCNE

- ✧ Nursing Journals
- ✧ Nursing Books
- ✧ Nursing Training Programs
- ✧ Nursing Conferences

## CCNE Training Programs

As a premier nursing center and collaboration platform. CCNE is dedicated to supporting new nurses who are entering practice as well as experienced nurses who are changing specialty areas. CCNE has 70 different educational nursing training programs, which help the aspirants to gain knowledge in the divergent areas of nursing. Each program is designed by eminent Professors, Researchers and Experts in the different filed of nursing science and research. Duration and target audience will entirely depend on the type of course chosen.

A variety of teaching methods are used to enhance the learning experience including didactic instruction, group discussions, skills laboratories, simulation, precepted clinical experiences, competency-based orientation, and online learning. CCNE's Basic and Advanced Training Programs falls under following categories:

- 1. Emergency and Critical Care Nursing Curriculum for PGCC**
- 2. Core courses in Critical Care Nursing**
- 3. Advanced Critical Care Nursing**
- 4. Emergencies and Critical Care and their Management**
- 5. Nursing Skills**
- 6. NCLEX and other Programs**
- 7. Critical care Nursing-Alterations**
- 8. Life Support Training Programs**
- 9. Specialty Courses**

# Emergency and Critical Care Nursing Curriculum for PGCC

It has been surveyed that many nurses don't have complete knowledge and are not properly skilled while treating a patient in emergency department. The critical care nurse requires a specialist knowledge and skill base to effectively manage patients in the critical care environment. This course focuses on enabling participant to develop proficiency in the management of patients admitted to critical care units within the health care sector.

The Nursing Program prepares nurses to provide direct client care in a safe, effective manner across multiple settings. The registered nurse (RN) is prepared to manage the care of clients in any setting to achieve an optimal state of health. The RN uses the nursing process to assess and analyze the health needs and/or problems of clients, plan and implement appropriate actions based upon nursing diagnosis or identified client needs and evaluate the extent to which expected outcomes are achieved.

Participants will be provided study material and Practical Knowledge/Hands on training through-out the course. This one-year program contains 12 modules and each module consist 2-5 chapters with deep and vast knowledge of a particular topic. Each participant must finish one module in a month and in the end of module there will a test to judge the knowledge of the candidate. Participant have to submit assignments also on various topics while pursuing this program.

## Program Purpose

The purpose of this course is to prepare trained nurses or providers, leaders, managers, and coordinators of care as well as accountable members of the nursing profession.

## Program Aim/Objective

- ★ To trained quality nurses.
- ★ To optimize the outcome for patients at risk of developing acute illness.
- ★ Enhance the knowledge, confidence and performance of ward staff in dealing with acutely ill patients.
- ★ Encourage teamwork and communication.
- ★ Promote a multi-professional approach to patient care and maximize the efficient use of critical care services.
- ★ Address clinical governance and clinical risk.

## Program Duration

Duration to complete the program is 1 year

## Eligibility

Any Enthusiastic student /Professional- Pursuing diploma/Graduation/Post-graduation in any nursing and scientific discipline can join. Experienced professionals and researchers too are advised to join this program for enhancing their knowledge in Emergency and Critical Care Nursing.

## Fee Structure

Indian Candidate	Overseas Candidate
Rs. 20,000/-	USD 500

*inclusive of GST18%*

## Scholarships/Fee Grant

[1] Upto 20% scholarships are awarded to participants based on the following criteria:

- Physically Challenged.
- Based on last academic performance in graduation/post-graduation.
- Group scholarship.

[2] Fee waiver/discount will be considered after analyzing the participants performance circumstances leading to failure of program .

Please visit: ***nursing.celnet.in*** for scholarship details.

## Program implementation methodology

Join the program by submitting the application form along with the necessary fee.

Study material will be provided through online mode only after receiving the payment and application form.

Practical Knowledge/Hands on training will be provided by Affiliated Hospital.

**\* Please consult for affiliated hospital in your area.**

## Award of Certificate

A participant will be awarded a certificate after the submission of compulsory final assignment/project report (as per mentor suggestions). The time duration required to complete the program is one year. Participants are instructed to complete the course within a stipulated time period of one year. Failing to meet this timeline requires a re-registration in the same program by resubmitting re-registration fee Rs.2000, which is valid for next 6 months or till next exam.

## Career Opportunities for Nurses

The growth is projected to come from new job openings at new general and specialized hospitals as well as the need to replace nurses who leave full time employment to work part time, retire or to make career changes. There is currently a nursing shortage, both at the RN level as well as at the nursing assistant and nursing aide levels.

About three out of every five nursing jobs are in the inpatient and outpatient departments of hospitals. The remaining nursing jobs are in:

- ★ Physicians' offices
- ★ Nursing care facilities
- ★ Home health care
- ★ Employment services
- ★ Government agencies
- ★ Outpatient care centers
- ★ Education - Colleges and Universities

# **Syllabus/ Curriculum**

Syllabus has been constructed/ designed by subject matter experts for the development of required skills throughout the program.

## **Module 1: Introduction & Overview**

Lesson 1 - Emergency and Medical Emergency

Lesson 2 - Medicine and Emergency Medicine

Lesson 3 - Organization of EMD (Emergency Management Department) and disaster management plan in emergency

Lesson 4 - Organization of Emergency MS (Emergency Medical Services)

Lesson 5 - Legal Aspects of Emergency Medicine Nursing

## **Module 2: Airway**

Lesson 1 - Airway Management

Lesson 2 - Mechanical Ventilation

Lesson 3 - Modes of Ventilation

Lesson 4 – Weaning

## **Module 3: Trauma & Orthopaedics**

Lesson 1 - Trauma Emergencies

Lesson 2 - Pediatric trauma

Lesson 3 - Orthopedic Emergencies

## **Module 4: Wounds & Analgesia**

Lesson 1 - Wound assessment and Management

Lesson 2 - Anaesthetics and Anesthesia

Lesson 3 - Analgesia in Emergency Room

## **Module 5: Medical Emergencies Part 1**

Lesson 1 - Cardiac Emergencies

Lesson 2 - Syncope and Cardiac Arrhythmias

Lesson 3 - Respiratory Emergencies

Lesson 4 - Pulmonary Embolism, Haemoptysis and Pneumothorax

## **Module 6: Medical Emergencies Part 2**

Lesson 1 - Endocrine Emergencies

Lesson 2 - Neurological Emergencies

Lesson 3 - Psychiatric Emergencies

Lesson 4 - Septic Shock

## **Module 7- Medical Emergencies Part 3**

Lesson 1: Acid base balance and Electrolyte Disorders

Lesson 2: Gastrointestinal & Hepatobiliary

## **Module 8- Surgical and Transfusion Emergencies**

Lesson 1: Surgical Emergencies

Lesson 2: Urogenital Emergencies

Lesson 3: Transfusion Emergencies

## **Module 9 - Obstetric, Gynaecologic & Paediatric Emergencies**

Lesson 1: Obstetric and Gynaecologic Emergencies

Lesson 2: Paediatric Emergencies

## **Module 10 – Toxicology**

Lesson 1: Approach to the Poisoned patient

Lesson 2: General principle of Poisoning Management

## **Module 11- Ear & Eye Emergencies**

Lesson 1: Otolaryngologic Emergencies

Lesson 2: Ophthalmic Emergencies

## **Module 12 - Environmental Emergencies**

Lesson 1- Heat Stroke

Lesson 2- Drowning

Lesson 3- High Altitude Syndrome

Lesson 4- Radiation Hazards

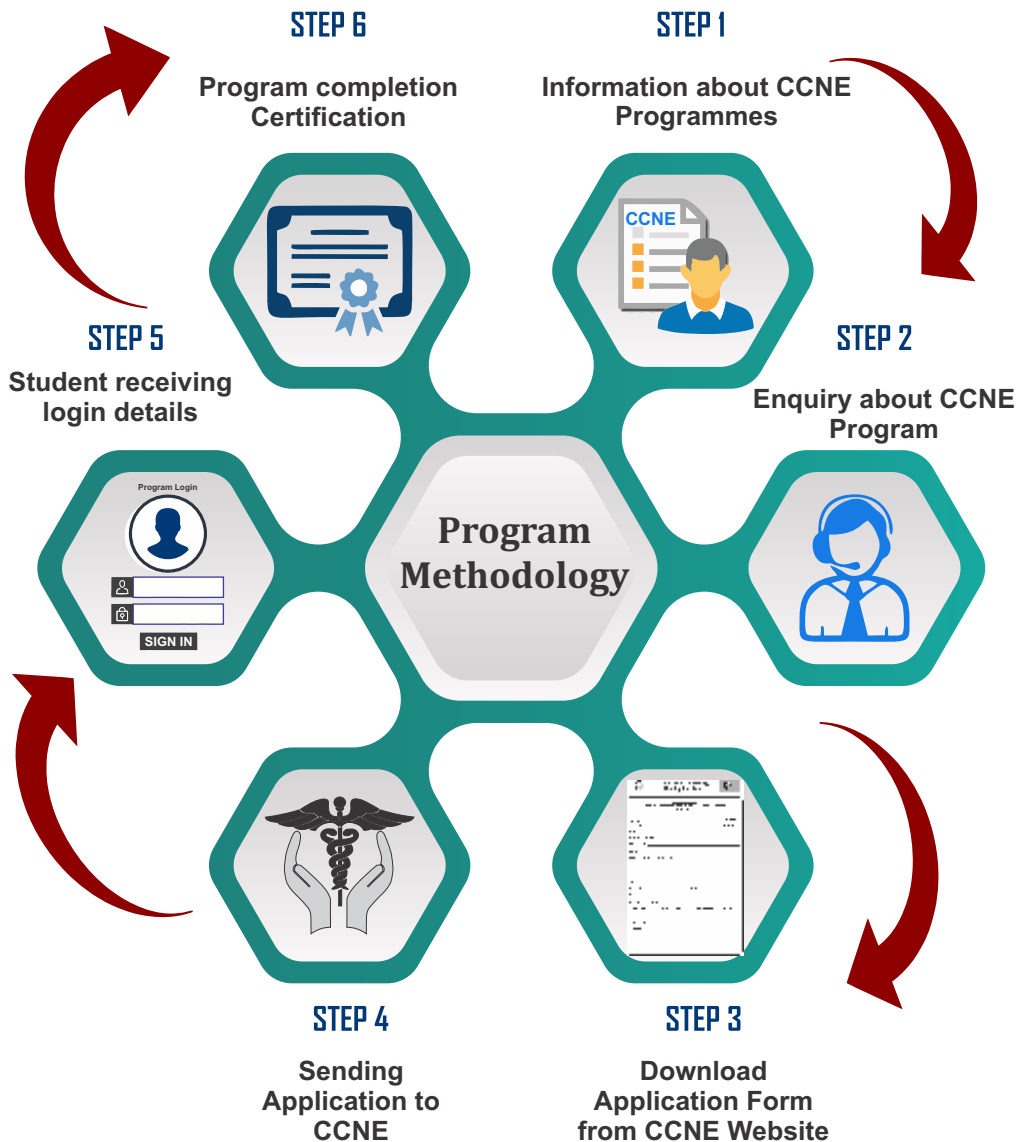
Lesson 5- Hypothermia

## **Course Learning Outcomes-**

After completion of this program participants will be able to:

- ★ Prescribe nursing activities within an environment which reflects ethical and legal standards of nursing practice.
- ★ Manage the patient care environment in a variety of settings with regard to factors affecting safety across the lifespan.
- ★ Evaluate the effects of culture, values, and the environment, to develop a plan of care that facilitates coping of patients/family members/significant others.
- ★ Evaluate therapeutic nursing interventions to reduce risks of patients' health alteration within a variety of settings.
- ★ Collaborate with member of the health care team to modify the plan of care and promote optimal physiologic function for patients within a variety of settings.
- ★ Demonstrate an understanding of critical care across the lifespan e.g. pediatrics and older persons.
- ★ Reflect on the health ethics and economics of critical care provision.

# Program Delivery Methodology





## Program Benefits

### *Include in preparing quality nurses for:*

- ★ Integrate life-long learning strategies to support critical thinking in nursing practice.
- ★ Analyze systems within organizations and disseminate recommendations to promote safe quality health care.
- ★ Utilize evidence-based practice process to improve nursing practice and health care outcomes
- ★ Practice with regard for shaping healthcare, finance and regulatory policies to influence allocations of healthcare resources.
- ★ Use intra- and inter-professional communication and collaboration to promote care coordination for safe quality patient care.
- ★ Apply levels of prevention to promote well-being and prevent disease in complex situations for individuals and groups.
- ★ Exhibit professional behaviors as a member of multidisciplinary teams.
- ★ Practice caring, competent, holistic, high-quality patient-centered nursing in complex situations.

## Joining Procedure

Aspirants who wish to apply for this program can download the application form from our website (<http://nursing.celnet.in>) or send written request with DD of Rs. 100 or USD 30 (overseas) in favor of “**Consortium e-Learning Network Pvt. Ltd**” for a complete brochure and application form of this program.

Duly filled application form (enclosing a Bank Draft issued in favor of “**Consortium e-Learning Network Pvt. Ltd**” along with copy of the certificates/marksheets with highest degree/diploma should be sent to: center for continuing nursing excellence Division of Consortium e- Learning Pvt.Ltd.

**A-118, First floor, Sector 63, Noida-201301, UP, India**

## Evaluation and Certification

Examination/Evaluation for program will be conducted periodically both online as well as through written assignment. The time duration required to complete the program is 1 year. Students are instructed to complete and ensure submission of the said assignment to CCNE within a stipulated time period of 1 year. Failing to meet this time-line requires a re-registration in the same program, by remitting a re- registration fee of 2000=00 INR/ US\$75=00. This facilitates an extension of three months (maximum) period for the submission of final assignment/ paper.

- ★ Mentors from CCNE and CCNE nominated outside experts assess the progress of the candidate's performance, by reviewing/ evaluating the assignments, submitted online/ offline by the candidates.
- ★ The assignment papers will be prepared covering the various facets of the Syllabus.
- ★ The assignments may be short objective and detailed essay types as well. These are of compulsory and optional types.
- ★ Candidates may take a note that, plagiarism is taken seriously. It can result in withdrawal from the program.

- ★ Candidates are required to complete at least two compulsory detailed assignments that attempt to take care of all important facets of the program. One of them is of course meant for the self-assessment of the candidates. The candidates are empowered to assess themselves. They need to observe the stipulated time lines in the submission of these assignments.
- ★ This being a distance participation program, candidates will be required to submit their assignments online/through email at the marked loci using the 'Candidates Corner'. The mentors will provide their assessment and comments for corrections, revision.

Evaluation of every participant will be done on the basis of various assignments, final online examination and the project report submitted to CCNE. Every deserving candidate passing the course shall be provided the coveted certificate and statement of marks by Centre for Continuing Nursing Excellence in hard copies by registered post.

## Grading Criteria for the Assignments:

	Grading Criteria for the Assignments
Grades	Criteria - evaluation yard sticks
<b>A+</b>	<b>Excellent</b> 1) Fully understand the work and showed an outstanding competence 2) Very high degree of individual style and insight
<b>A</b>	<b>Very Good</b> 1) Fully understand the work and showed the competence 2) Contributed well above the requisite yardsticks
<b>B+</b>	<b>Good</b> 1) Good understanding of the assigned work. 2) Hard work to fulfill the requirements of the assignment is reflected
<b>C</b>	<b>Poor</b> 1) No understanding of assignment . 2) No Sincere effort seen in understanding and execution of assignment
<b>D</b>	<b>No scores / Absent</b> 1) No Submission of assignment . 2) Assignment is Irrelevant 3) Assignment has to be re-written 4) Evaluation of re-written assignment

# Roles

## Participant's Role:

- ★ Submission of complete application form and necessary program fee
- ★ Follow course guidelines and complete all modules and assignments on time.
- ★ Submission of Mid Term Assignments, Final Online Exam & Project Report to CCNE
- ★ Program Completion requirements.

## CCNE's Role:

- ★ Providing access to the Program
- ★ Guidance & support
- ★ Evaluation of all submissions
- ★ Award of Statement of Marks
- ★ Certification

## Change in information policy

Any change in information provided to CCNE at the time of registration, will only be considered through a written communication only. No other mode of communication will be accepted

## Note-

CCNE reserves the right to change the commencement/conclusion dates of the program, with or without notice to the participants. CCNE strives to provide study material to the participants in time, however, in the delay from CCNE'S side in providing the study material, the participants will be compensated with an extended timeline accordingly.

The Director CCNE is the final authority in all matters pertaining to this program.

# FAQ's

## General

**Que:** What is an online program? And how does it differ from normal Distance Learning Program?

**Ans:** An online program is a advance distance learning programme in which the student is not required to come physically to a campus or a classroom regularly. Student is required to study the interactive online study material through Internet at his own pace. Examinations are conducted at the end of each module.

**Que:** What extra edge does CCNE Programmes give me?

**Ans:** The programmes are self-paced and are offered online four times in a year (Mar, June, Sept and Dec.)

Interactive e-Learning Study Material (LMS) developed by specialists in the field is available to students online for anytime anywhere learning.

Online presentations, videos and quizzes at the end of each chapter make the reading more interesting, engrossing and easy for self-assessment. Online Assignments, Quizzes Online Mentoring and Support, Chat Sessions, Discussion Forums.

Stamped Certification and Mark sheet from the Director of Centre for Continuing Nursing Excellence.

**Que:** Who will benefit from CCNE's online programmes?

**Ans:** Graduation / Post-graduation / PhD in any scientific discipline.

Experienced professionals, academicians and researchers too are advised to join CCNE's advanced E-Learning program.

## Course Related

**Que:** What Kind of program is it?

**Ans:** Emergency and Critical Care Nursing Program is certification course covering online and practical training. It is mainly designed for nurses to develop proficiency in the management of patients admitted in critical care units. Program prepares nurses to provide direct client care in a safe, effective manner. This 1 year program contains 12 modules and each module consist 2 to 5 chapters. Practical Knowledge/hands on training will be provided by affiliated hospital.

**Que:** How can I apply for an online programme?

**Ans:** You may download the application form from CCNE website

- ★ After filling the form with your complete details, attach all the required documents and send to us either online (Scanned copy) or through post along with the program fee. Do not forget to attach your passport size photograph
- ★ You may pay the program fee either by Cheque/Draft, Cash transfer or NEFT transfer

**Que:** What are documents required at the time of admission?

**Ans:** The candidate have to submit the following documents at the time of admission along with filled application form.

- ★ Proof of date of birth (High School Mark sheet)
- ★ Qualifying Exam Certificate & Mark sheet
- ★ One passport size photographs
- ★ Course fees & Registration fees

**Que:** How much is the course fee?

**Ans:** Program/ Course fees are different for every course. You may get the fee detail of any program from CCNE's Website.

**Que:** How much is the Registration Fee?

**Ans:** CCNE charges a sum of 300 INR as registration amount.

**Que:** How can a participant access CCNE's online programmes?

**Ans:** When you are successfully enrolled for a programme, you will be issued login details (User ID and a password) to access CCNE's online programme.

**Que:** Do I have to attend regular classes?

**Ans:** No. You do not have to attend any classes. CCNE's program is fully online and depending upon the program there will be contact sessions.

**Que:** How are marks evaluated by CCNE?

**Ans:** CCNE will evaluate your performance and your final grading will be based on the following

- ★ Regular Tests
- ★ Project
- ★ End Examination



# Centre for Continuing Nursing Excellence



## Application Form

### Emergency and Critical Care Nursing for PGCC

One Year Program with e-learning modules

Affix your latest  
passport size  
photograph duly  
signed by you

Form No: \_\_\_\_\_

Enrolment No: \_\_\_\_\_

1. Name: \_\_\_\_\_

2. Father's/Husband's Name: \_\_\_\_\_

3. Date of Birth: \_\_\_\_\_

4. Gender: \_\_\_\_\_

5. Postal Address (Capital Letters Only): \_\_\_\_\_  
\_\_\_\_\_

6. City: \_\_\_\_\_ 7. Pin Code: \_\_\_\_\_

8. State: \_\_\_\_\_ 9. Email: \_\_\_\_\_

10. Country: \_\_\_\_\_ 11. Nationality: \_\_\_\_\_

12. Contact Number: \_\_\_\_\_

#### 13: Academic Qualification:

Examination	Board/University	Year of Passing	%/Grade
Graduation			
Post-Graduation			
Any Other			

**Experience (Last 3 Only):**

Organization (Name and Address)	Designation	Total Experience	Responsibilities

15. Crossed Demand Draft/Cheque No: \_\_\_\_\_

16. Date: \_\_\_\_\_ 17. Drawn on: \_\_\_\_\_

18. Money: \_\_\_\_\_

*(Bank draft must be drawn in favor of "Consortium e-Learning Network Pvt. Ltd " payable at Delhi or New Delhi)*

*Candidates are advised to write their name, address and contact no at the back of demand draft/cheque*

19: Documents to be attached with the application form:

- Total program fee draft at the time of submitting application form
- Certificate and marksheet of the all degree/diploma
- Three Passport size photograph

**Important Information**

The program in which you are seeking participation, is CCNE's independent knowledge enhancement program that gives knowledge about nursing. The program neither promises any job guarantee nor provides any specific eligibility to pursue higher studies. In case of any dispute, it would have to be resolved through arbitration, under Arbitration and Conciliation Act 1966, by the sole arbitrator appointed by the CCNE, Noida. The jurisdiction of the same will be Court of District Buddha Nagar, Noida, India only.

**Declaration by the Applicant**

I hereby declare that I have read and understood the details of the program for which I seek admission. I have provided the necessary information in this regard.

In the event of any information found or misleading, my candidatures shall be liable to cancellation by CCNE at any time and I shall not be entitled to refund of any fee paid by me to CCNE. I fully understand and agree that fee once paid is not refundable in any circumstances and is also not transferable.

Place: \_\_\_\_\_

Date: \_\_\_\_\_

Signature of Candidate: \_\_\_\_\_

**For Office Use Only**

Application received on: \_\_\_\_\_

# Centre for Continuing Nursing Excellence (CCNE)



**Register  
Now**

## Membership Available for

**Corporates**

**Institutions**

**Professionals**

**Students**

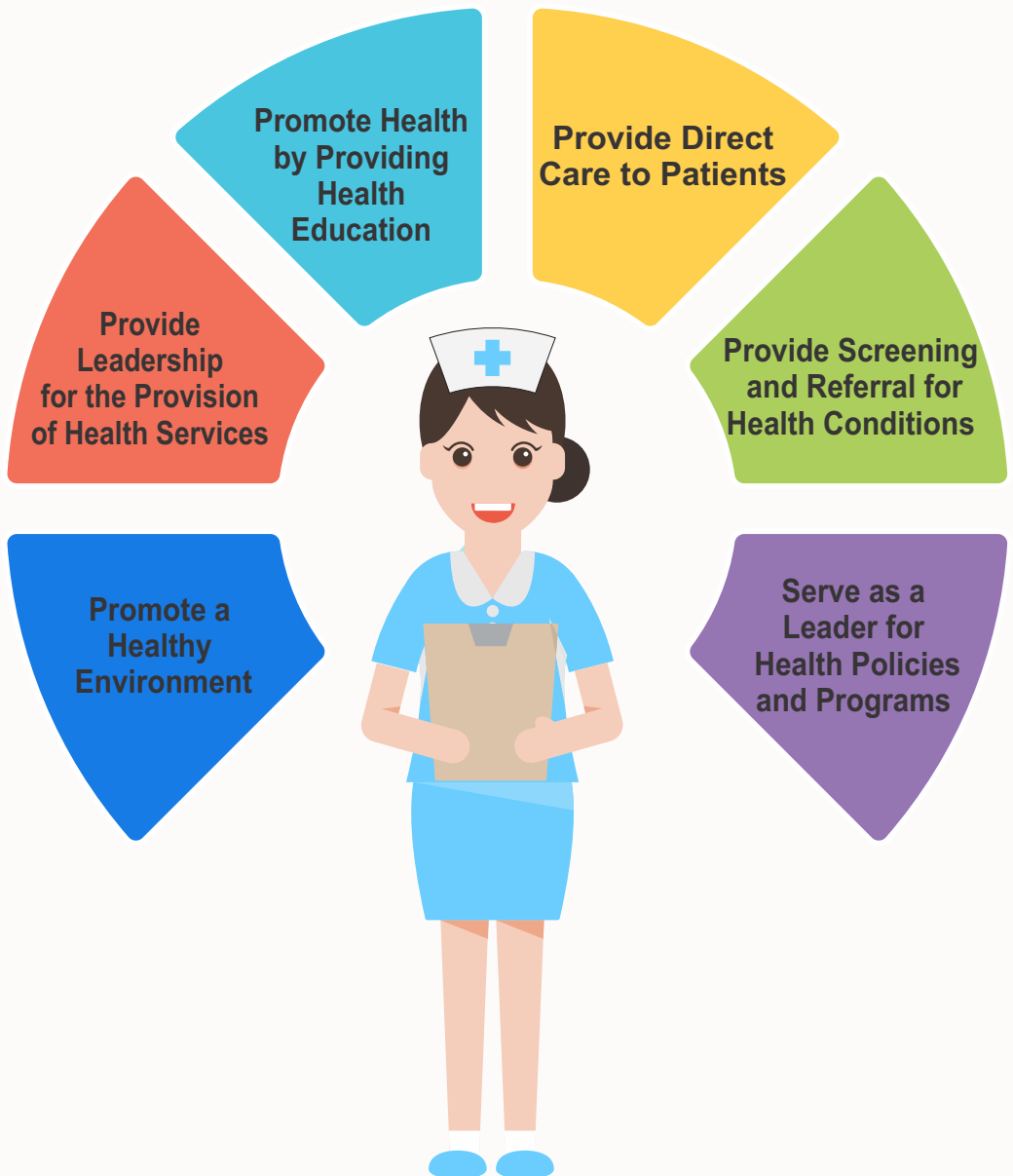
To know more about the initiatives, you may contact

☎ (+91) 120 4781 216 | 🌐 <http://nursing.celnet.in> | ✉ [nursing.excellence@conwiz.in](mailto:nursing.excellence@conwiz.in)

**ENQUIRE  
NOW**



## Role of Nurses



# Types of Membership

☐ Institutions    ☐ Corporates    ☐ Professionals    ☐ Students

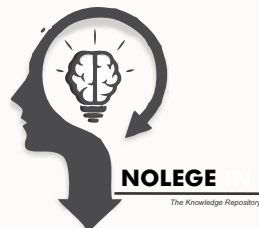
S.N.	Category Membership	Annual Fee (Rs.)	GST	Total Fee (Rs.)
1	Corporates Members	10,000/-	18%	11,800/-
2	Institutionals Members	7,500/-	18%	8,850/-
3	Professionals Members	3,000/-	18%	3,540/-
4	Students Members	2,000/-	18%	2,360/-

## Benefits





**CENTRE FOR CONTINUING  
NURSING EXCELLENCE**



# Centre for Continuing Nursing Excellence (CCNE)

Education   Learning • Training   Research



**Emergency and Critical Care  
Nursing for PGCC**

**Centre for Continuing Nursing Excellence**

A division of Consortium e-learning Network Pvt. Ltd. (CELNET)

A-118, 1st Floor, Sector-63, Noida,  
Uttar Pradesh, PIN 201301, India

**nursing.celnet.in**